

# APPLIED<sup>®</sup> SYSTEMS

## MEMBRANE CLEANING SYSTEMS

Membrane cleaning systems are designed to be used with any RO system to clean membranes without removing them from the system. Our cleaning systems are provided with hoses and quick disconnect fittings to allow connection to the membrane system.

### STANDARD EQUIPMENT

Cleaning Systems are skid-mounted with heavy-duty castors.

- On/Off Switch
- Stainless Steel Centrifugal Pump
- 5 Micron Cartridge Filter(s)
- Filter Housing: Polypropylene for Y-CS10 to Y-CS60  
Stainless Steel for Y-CS100 to Y-CS300
- 316 Stainless Steel Gauges (2)
- Quick Disconnect Fittings
- Temperature Gauge
- Flow Meter: In-Line for Y-CS10 to Y-CS40,  
Digital for Y-CS60 to Y-CS300
- TEFC Pump Motor
- Recycle Loop with PVC Valve
- Solution Tank (Polyethylene) with low level tank safe-guard.
- Flexible Braided Hose

### OPTIONAL EQUIPMENT

- Stainless Steel Immersion Heater
- Solution Mixer
- pH Monitor
- Crating\*

\*Recommended Minimum Option

Model	PV's Cleaned in Parallel (#/Dia)	Inlet Outlet (in/cm)	Tank Size (Gals/Lit)	Flow (GPM)		Pump Size		Dimensions (in/cm)			Approx. Weight (lb/kg)
				Min 50PSI	Max 60 PSI	GPM	PSI	Length	Width	Height	
<b>Y-CS10</b>	2/2.5" or 1/4"	1/2.5	55/208	10	15	10	60	22/55	36/90	48/120	300/136
<b>Y-CS20</b>	4/2.5" or 2/4"	1/2.5	100/380	20	25	20	60	36/90	57/163	55/138	450/205
<b>Y-CS40</b>	4/4" or 1/8"	1.5/4	200/760	40	50	40	60	51/128	63/160	60/150	600/270
<b>Y-CS60</b>	6/4" or 2/8"	1.5/4	200/760	60	75	60	60	51/128	63/160	60/150	600/270
<b>Y-CS100</b>	3/8"	2/5	500/1895	100	125	100	60	78/195	90/225	72/180	650/295
<b>Y-CS150</b>	4/8"	3/8	500/1895	150	175	150	60	78/195	90/225	72/180	720/325
<b>Y-CS220</b>	6/8"	3/8	500/1895	220	250	220	60	78/195	90/225	72/180	790/360
<b>Y-CS300</b>	7/8"	4/10	500/1895	300	340	300	60	78/195	90/225	72/180	850/386



4916 River Reach, Delta, BC, V4K 4A4  
 Tel: 1-604-878-8092, Fax: 1-888-689-8092  
 Email: sales@pureworld.ca

**!** Membrane Cleaning Chemicals are listed in Section 9.

# APPLIED<sup>®</sup> SYSTEMS

## EXTENSIVE EXPERIENCE IN SPECIALTY SYSTEMS

Applied Membranes' experience extends beyond standard water purification systems. We have supplied complete systems for dialysis, ultrapure water, boiler feed water, USP grade water, Water for Injectables (WFI), water reuse, dye recovery, ground water remediation, mobile water purification systems and many more.

We also supply specialty membranes to OEMs for use in applications such as oily water treatment, electro-coat paint, dairy, sugar concentration, juice concentration, and other applications

AMI welcomes the opportunity to work with you to fulfill your specific filtration needs.



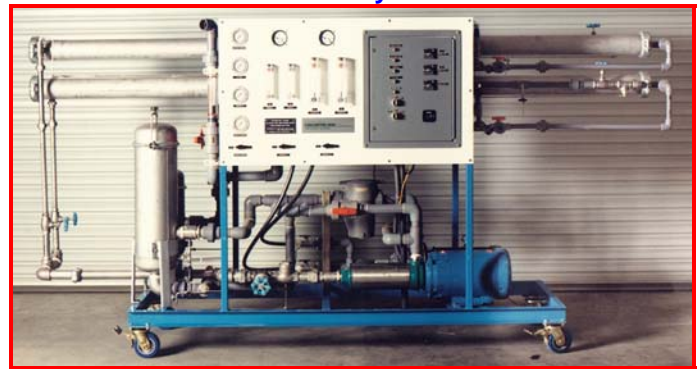
16"x60" Membrane Application



USP System



Portable Water Purification



Pilot Test Plant



Pureworld Solutions Inc.

Vancouver Office:

4916 River Reach,  
Delta, BC, V4K 4A4

T: 604-878-8092  
[info@pureworld.ca](mailto:info@pureworld.ca)  
[www.pureworld.ca](http://www.pureworld.ca)