

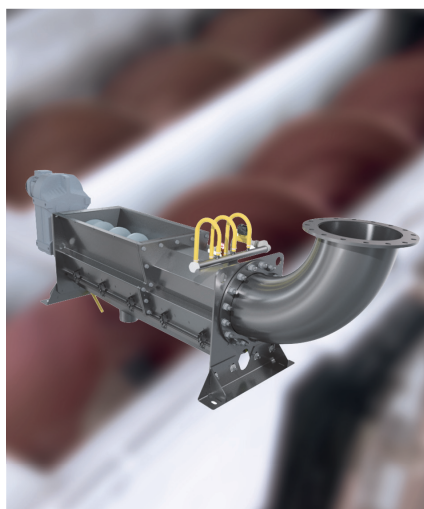


Noggerath

A brand of
Aqseptence Group

Noggerath® Wash Press NWP / Screenings Press NSP

Dewatering, compaction, pressing, and conveyance of solids, combined with the optional washing out of soluble organic constituents.



The Aqseptence Group offers with the Noggerath® Wash Press NWP / Screenings Press NSP a simple and reliable solution; a versatile and flexible manner, even into existing plants. The technology has been continuously improved since the first Noggerath® wash- screenings press was supplied. Due to the large number of machines already in operation, Aqseptence Group has gained extensive knowledge and experience concerning their application in both municipal and industrial installations.

The material, which is introduced via the infeed and drainage zone, is taken up by the conveying screw and pushed in the direction of the wash and compacting zone. The drainage bottom of the infeed zone enables a static dewatering of the medium. In the washing zone fecals are broken up and washed out and in the compacting zone the material is compacted, dewatered further and pushed through the friction pipe.

Benefits

- Weight reduction of the raw screening up to 80%
- Dry solids content of the washed screening up to 47%
- Modular design, infeed zone with extension module and flanged press zone
 - Infeed length expandable
 - Reduction of wear costs through individually replaceable modules
 - Good accessibility for maintenance and inspection
- Standard design flat profile slotted bottom brushless self-cleaning
- Screw made of wear-resistant special steel with double blade thickness at the screw flight
- Variants of the drainage bottoms for adaption to screen size and drainage capacity
- Return of organics to support denitrification

Applications & fields of operation

The Noggerath® Wash Press NWP / Screenings Press NSP have a wide variety of applications in industry and municipality:

- Washing and dewatering of screenings
- Compaction of all kinds of short-fibred solids

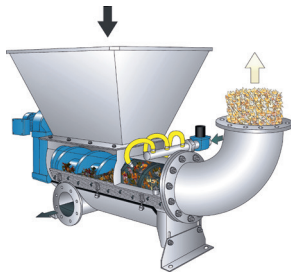
Product variants

NWP/NSP-FF	Standard design, infeed and press zone with flat profile slotted bottom, for coarse and fine screening (>2 mm)
NWP/NSP-PF	Infeed zone with perforated bottom and press zone with flat profile slotted bottom with fine screening (>2 mm ≤10 mm) and higher rinsing water content in the screenings
NWP/NSP-PW	Infeed zone with perforated bottom and press zone with Wedge Wire slotted bottom, for fine screening (≤2 mm)

Unique features

- Low rotational speed ensures gentle washing
- Wear resistant profiles
- Modular design reduces wear costs and is particularly easy to maintain
- Variants for adapting the opening width of drainage bottom
- Very high drainage capacity
- No blockage of the drainage section due to direct contact between screw and slotted bottom
- No "shear forces exerted on the basket" as there are no wear rails

Design sizes & performance



size	max. output capacity [m ³ /h]	
	parallel shaft gear	bevel gear
200	1.5	1.5
250	2.3	3.0
300	3.5	3.7
400	5.3	7.7
500	7.5	10.0

Materials

Casing, covers, supports, hoppers	Stainless steel AISI 304 (DIN 1.4301) or AISI 316 L (DIN 1.4404) Others on request
Screw	Special Micro Alloy Steel St 52 (carbon steel in acc. with AS Group standard), alternatively stainless steel AISI 304 (DIN 1.4301) or AISI 316 L (DIN 1.4404)

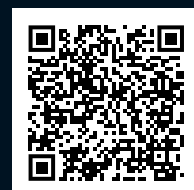
Options

- Hygienic bagging for the compacted material
- Direct pressing into spiral conveyor instead of screenings discharge
- Heating / frost protection for friction pipe
- NIR-hopper with integrated impeller for better organic washing

Aqseptence Group GmbH Water Treatment Systems

Ziegeleiweg 2
31675 Bueckeberg · Germany
Phone +49 5722 882 0
Fax +49 5722 882 282
noggerath@aqseptence.com

www.aqseptence.com



Version 1.3

The technical data stated in this brochure are indicative only and have to be determined for each individual case. Reserve technical changes.